



SANAKO Study 700

The affordable digital language learning system

Study 700 is designed to help teachers provide the appropriate level of support and encouragement for basic level language activities. Students benefit from essential language learning functionalities such as listening and speaking, while teachers are provided with the tools to support and monitor this student activity.

Study 700 is ideal for schools looking to install their first language lab within tight budgetary constraints. It is also suitable for schools looking to provide an easy-to-use solution for adult learners or an introductory level solution for young learners.

Study 700 can later be upgraded to Study 1200 which is an advanced language learning solution that provides a

full professional suite of recording and collaborative tools.

Not just for language teaching anymore, the Study 700 can be used across your curriculum with the addition of SANAKO Study Modules. These modules give you the ability to stream live video to the students' PCs, create multiple choice questions for quick assessments and request live feedback from your students. They also allow teachers to create multimedia teaching content, launch and collect homework files and take control of a student screen if necessary.

All the SANAKO Study solutions are easy to install and maintain and are built for compatibility with current and future versions of Microsoft .net technology.

Upgradable Language



Supporting Learners

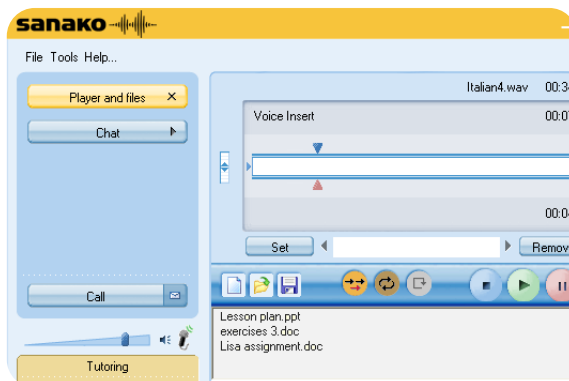
Study 700 allows teachers to use their digital learning resources to help manage student activity in a dynamic and exciting interactive environment. Study 700 makes it easy for teachers to launch applications and assignments to students, upload session files for guided learning activities, monitor student screens for support and collaboration, and even direct use of the Internet for managed web-based learning activities.

Communication resources such as live two-way audio and text messaging also make it easy for teachers to provide discreet individual support for students in need. They can also be used to create another layer of interactive language-based activities.

- Voice recording with voice insert and recap
- Support and monitor
- Launch applications and assignments
- Use guided web tours and controlled Internet browsing
- Manage student PCs by locking for attention, shutdown and restart
- Session files for guided learning material

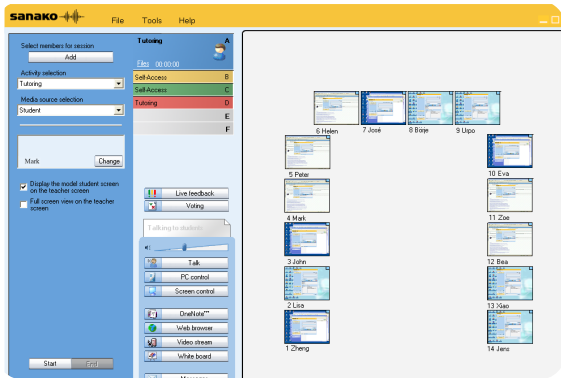
Learning by Doing

The Study 700 student application provides learners with an easy-to-use two-track multimedia recorder. With it, students can engage in introductory level language learning activities such as voice recording, voice insert and recap to improve their speaking skills in the target language. Typical exercises could include listen and repeat, question and answer and simultaneous translation. Bookmarks can also be used to help students engage in their listening and speaking activities.

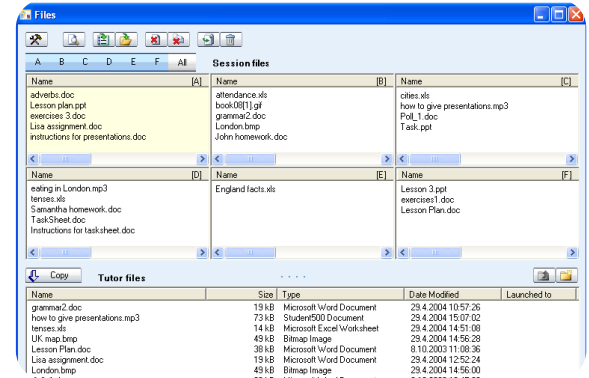


View of student interface in SANAKO Study 700 during voice insert exercise.

e Teaching Software



View of teacher interface in SANAKO Study 700 showing U-shaped class layout.



View of session files area used for launching learning material for students in SANAKO Study 700.

Trouble-free Usage

All Study software and modules can be protected by our complete support package including:

- SANAKO Software Maintenance
- SANAKO Training Services
- SANAKO Installation Services
- SANAKO Remote Support Services
- SANAKO On-line Training

SANAKO Study Modules

SANAKO Study solutions have complementary plug-in modules that introduce additional teaching and learning activities. Current modules include:

- SANAKO Study Examination Module
- SANAKO Study Video Live Module
- SANAKO Study Lite Recorder Module
- SANAKO Study Voting Module





SANAKO Study 700

MINIMUM REQUIREMENTS FOR THE TEACHER AND STUDENT PC

As per the requirements for the Microsoft® Windows® XP, Windows® Vista or Windows® 7 operating system

- Microsoft® .NET Framework® 2.0 or greater
- DirectX 9.0c
- 2 GB recommended for Teacher PC
- 100 MB of free disk space for installation*
- 1024 x 768 display resolution with 16-bit colors
- AC97 or HDA compatible sound card
- Network Adapter, TCP/IP support required
- Quick Time 7.0.3 or later is required for displaying certain file types and for the SANAKO Study Video Live Module

* The amount of free disk space required during the use of Study 700 varies primarily according to the use of the recording functionality - longer recording times require more disk space.

NOTE! Actual requirements may vary based on the system configuration. It is essential to make sure that the operating system runs smoothly on each PC where a Study 700 Tutor or Student application will be installed.



SANAKO Educational Solutions

The Sanako family of educational products combines the best of technology with outstanding sound quality to answer teachers' needs in a variety of teaching environments, ranging from dedicated language teaching labs to language and cross-curricular teaching software, virtual and multimedia classrooms and classroom management tools.

SANAKO Study 700 is a modular and dynamic software language teaching solution for teacher-led and independent learning.

SANAKO in Brief

SANAKO is an international software company supplying educational technology. Sanako's award-winning solutions are used in more than 19,000 schools, higher educational institutions and corporations in over 100 countries worldwide. Our Headquarters are located in Turku, Finland with sales offices in China, Finland, France, UK, United Arab Emirates and USA. Our products and services are supported by a network of knowledgeable distributors operating in nearly 70 countries. SANAKO is a Microsoft® Certified Partner, a Blackboard Building Blocks community member, and a WorldDidac Quality Charter member.

Advanced Technology from Finland